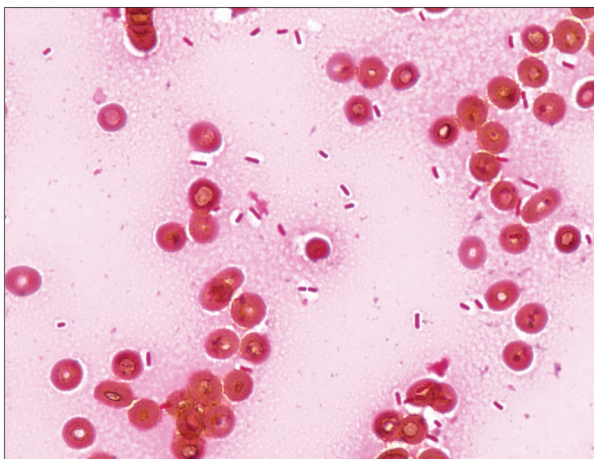


**Anemia with anisopoikilocytosis/target cells** is a common finding on peripheral blood smear reviews. Enrollees will review how the integration of the pathologist's peripheral smear review with other laboratory data, clinical history, and ancillary testing can be used to assist his or her clinical colleagues in determining when the etiology is something other than common iron deficiency or beta thalassemia.



**Interpreting the Gram stain** of a blood culture (*above*) is the first in a series of decisions enrollees will make in a case on unexpected susceptibility test results. In the same microbiology case, pathologists will learn how to set up and read the modified Hodge test (*below*).

